



LATIN METALS INC.

JUNE 2022
LACSHA PROJECT
Peru

TSX.V: LMS
OTCQB: LMSQF

Forward-Looking and Cautionary Statements

Forward Looking and Cautionary Statements This presentation contains forward-looking statements and forward-looking information (collectively, “forward-looking statements”) within the meaning of applicable Canadian and U.S. securities legislation, including the United States Private Securities Litigation Reform Act of 1995 concerning the business, operations and financial performance and condition of Latin Metals Inc. (the “Company”). All statements, other than statements of historical fact, included herein including, without limitation, statements regarding future capital expenditures and financings (including the amount and nature thereof), anticipated content, commencement, and cost of exploration programs in respect of the Company's projects and mineral properties, anticipated exploration program results from exploration activities, the discovery and delineation of mineral deposits, resources and/or reserves on the Company's projects and mineral properties, and the anticipated business plans and timing of future activities of the Company, are forward-looking statements. Although the Company believes that such statements are reasonable, it can give no assurance that such expectations will prove to be correct. Often, but not always, forward looking information can be identified by words such as “pro forma”, “plans”, “expects”, “may”, “should”, “budget”, “scheduled”, “estimates”, “forecasts”, “intends”, “anticipates”, “believes”, “potential” or variations of such words including negative variations thereof, and phrases that refer to certain actions, events or results that may, could, would, might or will occur or be taken or achieved. Forward looking information involves known and unknown risks, uncertainties and other factors which may cause the actual results, performance or achievements of the Company to differ materially from any future results, performance or achievements expressed or implied by the forward looking information. Such risks and other factors include, among others, the ability of the Company to obtain sufficient financing to fund its business activities and plans, operating and technical difficulties in connection with mineral exploration and development and mine development activities for Company's projects generally, including the geological mapping, prospecting and sampling programs for the Company's projects, actual results of exploration activities, including the estimation or realization of mineral reserves and mineral resources, the timing and amount of estimated future production, costs of production, capital expenditures, the costs and timing of the development of new deposits, the availability of a sufficient supply of water and other materials, requirements for additional capital, future prices of precious metals, tantalum and lithium, changes in general economic conditions, changes in the financial markets and in the demand and market price for commodities, possible variations in ore grade or recovery rates, possible failures of plants, equipment or processes to operate as anticipated, accidents, labour disputes and other risks of the mining industry, delays in obtaining governmental and regulatory approvals (including of the TSX Venture Exchange), permits or financing or in the completion of development or construction activities, changes in laws, regulations and policies affecting mining operations, hedging practices, currency fluctuations, title disputes or claims limitations on insurance coverage and the timing and possible outcome of pending litigation, environmental issues and liabilities, risks related to joint venture operations, and risks related to the integration of acquisitions, as well as those factors discussed under the heading “Risk Factors” in the Company's most recent annual management's discussion and analysis and other filings of the Company with the Canadian Securities Authorities, copies of which can be found under the Company's profile on the SEDAR website at www.sedar.com. Readers are cautioned not to place undue reliance on forward-looking statements. The Company undertakes no obligation to update any of the forward looking information in this presentation or incorporated by reference herein, except as otherwise required by law.

National Instrument 43-101 Keith Henderson, the President, CEO and Director of the Company, and a Qualified Person as defined by National Instrument 43-101, has approved the scientific and technical information concerning the Company discussed in this presentation

Cautionary Note to United States Investors As a Canadian issuer, the Company is permitted to prepare its public disclosures and this presentation in accordance with Canadian securities laws, which differ in certain respects from U.S. securities laws. In particular, this presentation uses the terms “mineral resource”, “measured mineral resource”, “indicated mineral resource” and “inferred mineral resource”. While these terms are recognized and required by Canadian securities laws, they are not recognized by the United States Securities and Exchange Commission (“SEC”) and are not normally permitted to be disclosed in SEC filings by U.S. companies. U.S. investors are cautioned not to assume that any part of a “mineral resource”, “measured mineral resource”, “indicated mineral resource” or an “inferred mineral resource” will ever be converted into a “reserve”. In addition, “reserves” reported by the Company under Canadian standards may not qualify as reserves under SEC standards. Under SEC standards, mineralization may not be classified as a “reserve” unless the mineralization can be economically and legally extracted or produced at the time the “reserve” determination is made. Accordingly, information contained or referenced in this presentation containing descriptions of the Company's mineral deposits may not be compatible to similar information made public by U.S. companies subject to the reporting and disclosure requirements of U.S. federal securities laws, rules and regulations. “Inferred mineral resources” have a great amount of uncertainty as to their existence and great uncertainty as to their economic and legal feasibility. It cannot be assumed that all or any part of an inferred mineral resource will ever be upgraded to a higher category. Historical results or feasibility models presented herein are not guarantees or expectations of future performance.

Currency All amounts in this presentation are expressed in Canadian dollars, unless otherwise stated.

THIS PRESENTATION IS NOT INTENDED AS, AND DOES NOT CONSTITUTE, AN OFFER TO SELL SECURITIES OF THE COMPANY.

The TSX Venture Exchange has not reviewed and do not accept responsibility for the accuracy or adequacy of this presentation, which has been prepared by the Company.

Opportunity

Early-Stage Exploration Potential

- Located in the emerging Northern Extension of the Cretaceous Porphyry Belt: ***Previously overlooked & underappreciated geologic setting***
- **>5 km x 2.5 km footprint** defined by coincident anomalous geochemistry, ground magnetics, and mapped alteration – remains open along strike
- Copper Endowment supported by results of channel sampling, with results including; **136m @ 0.24% Cu & 179 ppm Mo** from the Lacsha SW target area
- **Underexplored = Untapped Potential:** limited systematic exploration and no known drilling over primary porphyry targets



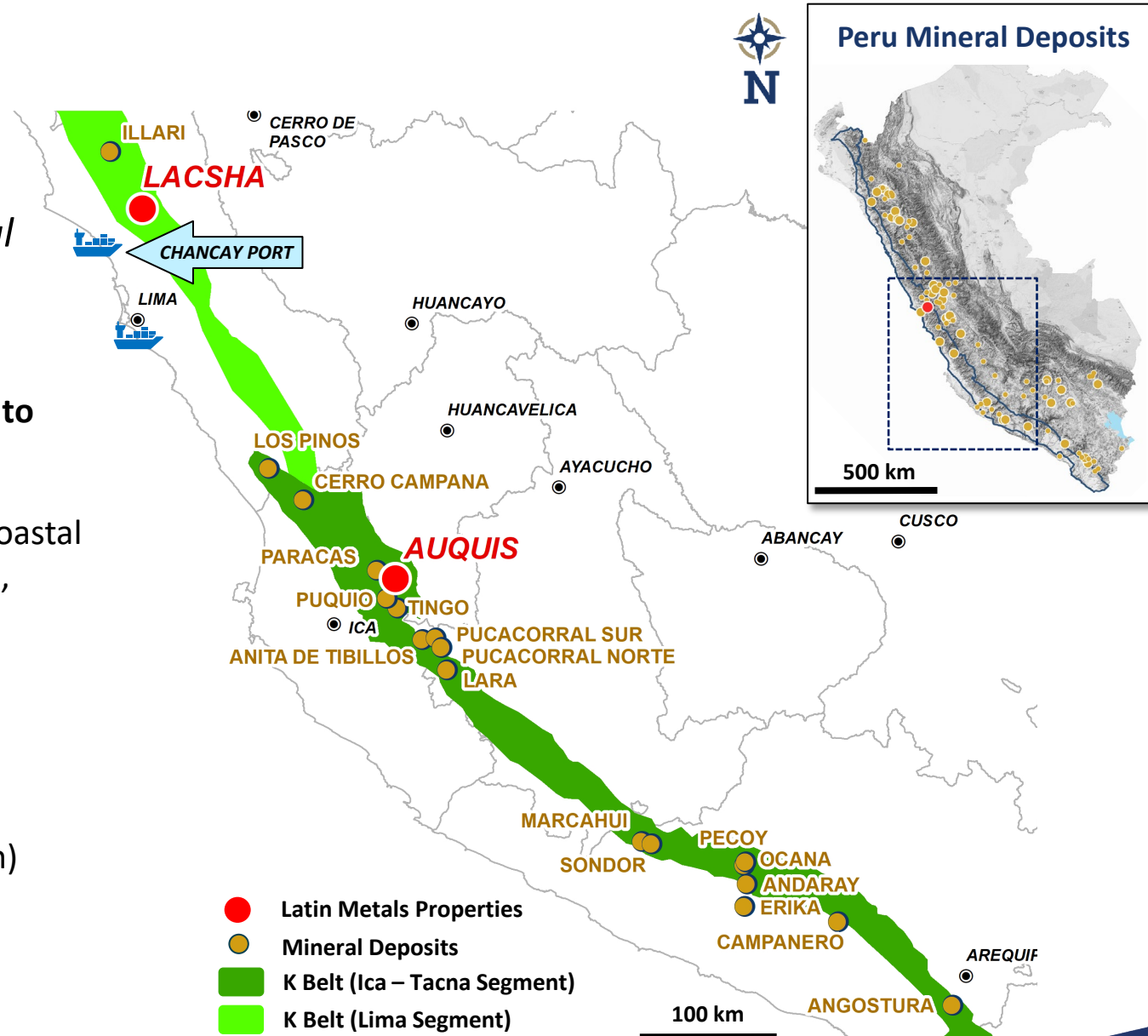
Regional Setting

Cretaceous Porphyry Belt: *Underexplored Potential*

- Until recently, the Northern Extension of the K Belt was overlooked for porphyry potential. **In 2011, the Illari discovery (Newmont) proved the extension of the belt to the north**
- Mineralization related to the granitic intrusions of the Coastal Batholith Complex, and structural controlled by regional, NW-SE fault systems

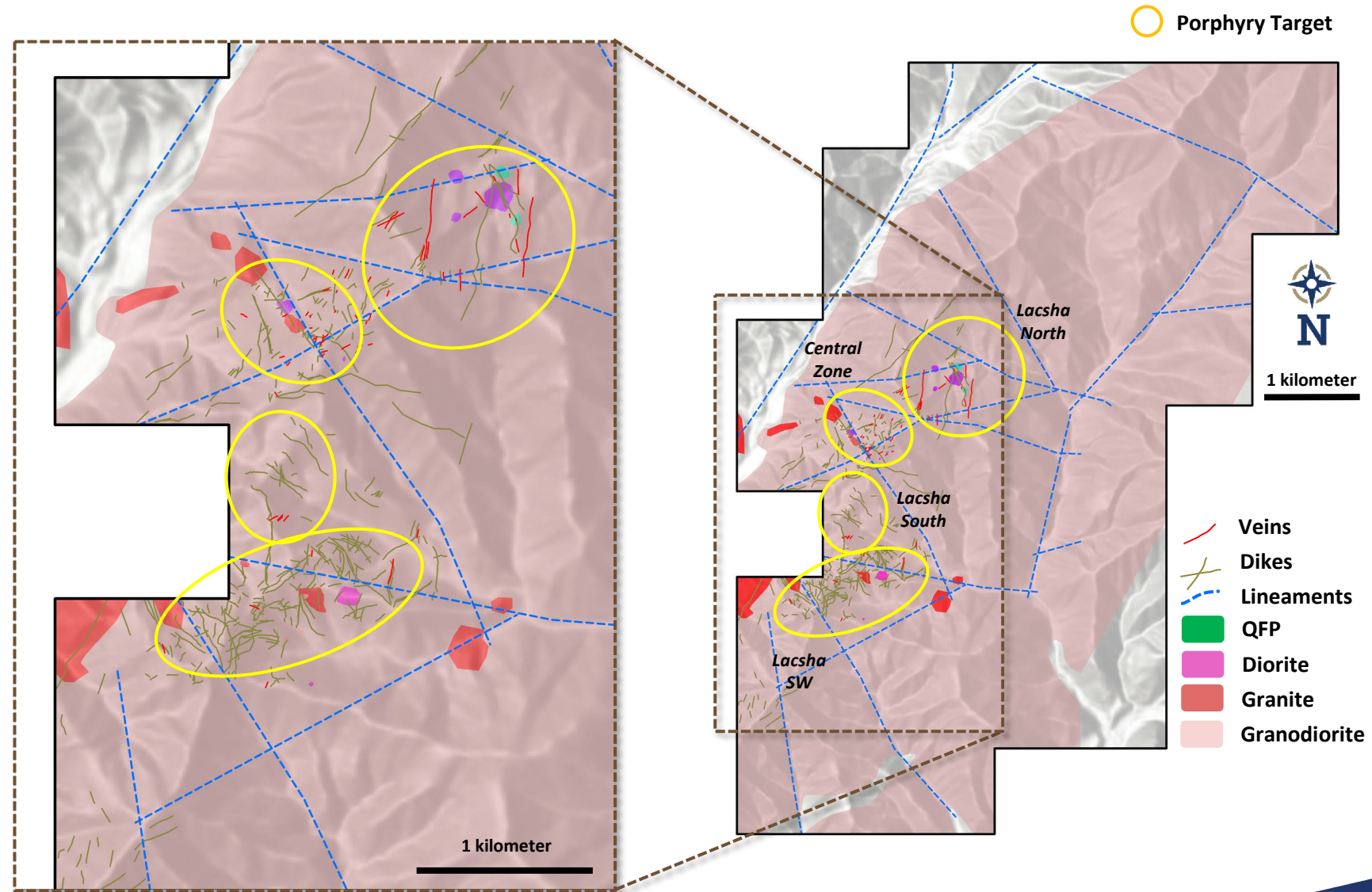
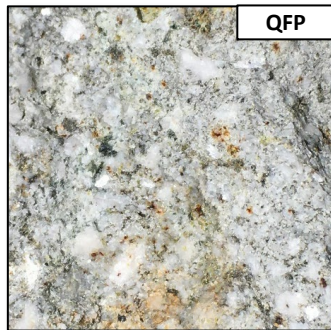
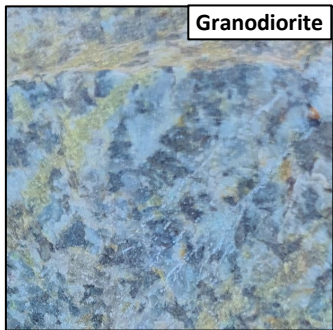
Infrastructure: *Favorable Location*

- 90 km north of Lima
- 40 km east of the new Chancay Port (under construction)
- Powerline <5 km from the property
- Partial road access



Lacsha Geology

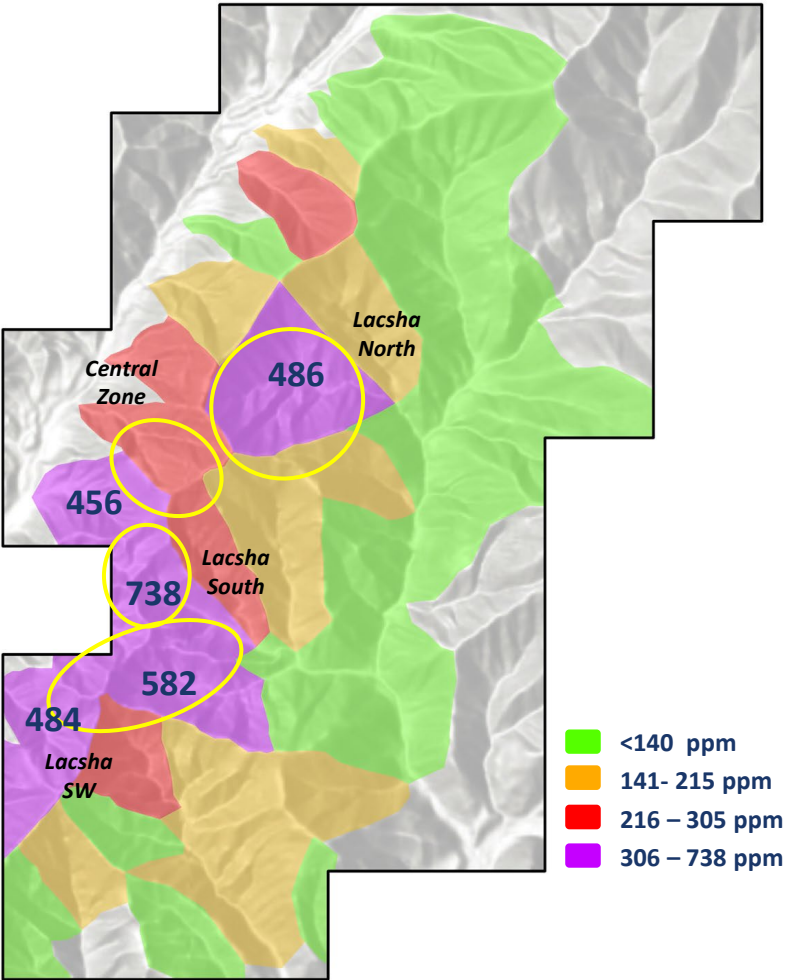
- *Paccho group granodiorite (Cretaceous) cut by granite, diorite and Quartz-Feldspar Porphyry (QFP) stocks*
- *Same host rocks as the nearby Illari Porphyry & Sumqwayra Porphyry*
- *Widespread alteration associated with magmatic-hydrothermal centers*
- *Copper and Molybdenum mineralization occurs on surface*



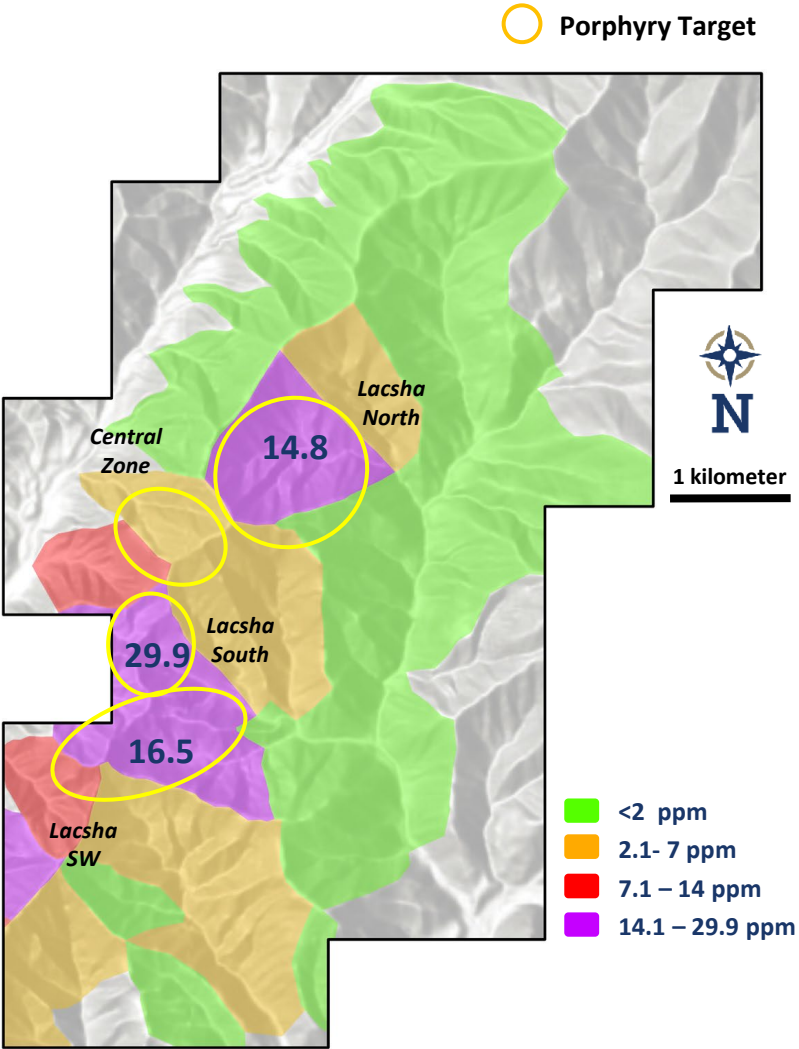
Stream Sediments

- *Target Basins: >300 ppm Cu combined with high Mo values*
- *41 stream sediment samples were collected*
- *Strongest correlation between Cu-Mo-Ag suggests porphyry affinity*

Correlation	Cu_ppm	Mo_ppm	Ag_ppm
Cu_ppm	1	0.64	0.75
Mo_ppm	0.64	1	0.5
Ag_ppm	0.75	0.5	1



Copper in Stream Sediments:
Basin Analysis

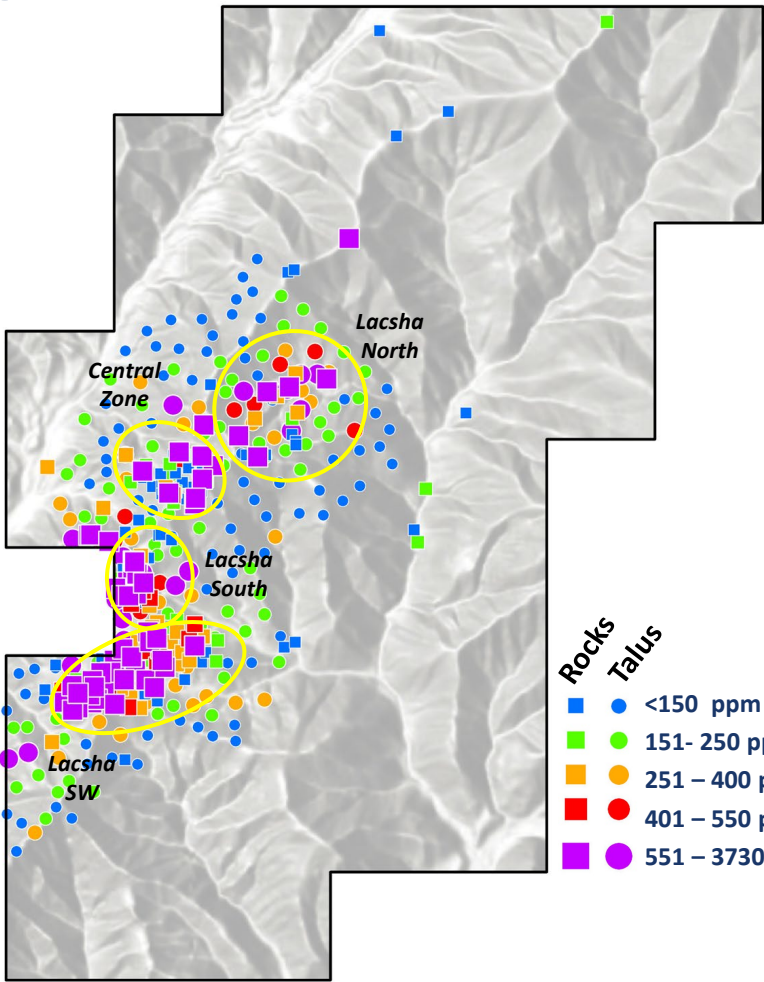


Molybdenum in Stream Sediments:
Basin Analysis

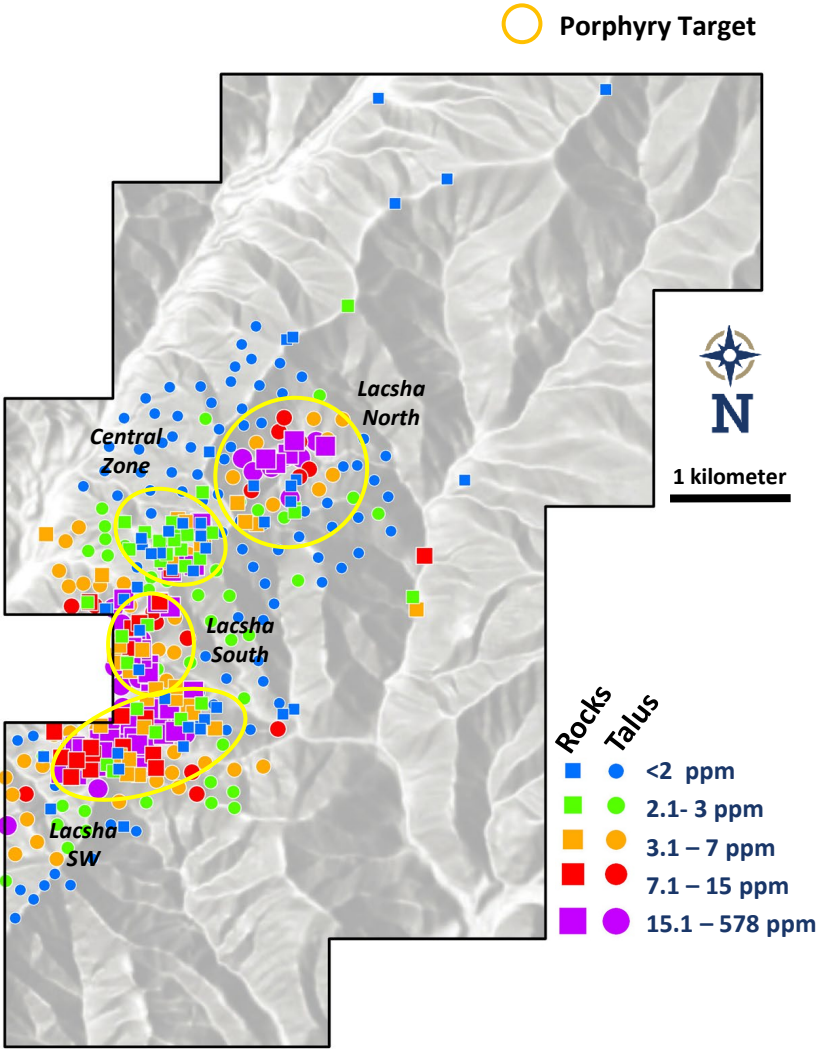
Rock & Talus Sampling

- Results define 4 primary targets; Lacsha North, Central Zone, Lacsha South, & Lacsha Southwest
- 241 samples collected including 185 chips and 56 talus fines
- Strongest correlation between Cu-Mo-Ag
- 4 Potential magmatic hydrothermal centers

Correlation	Cu_ppm	Mo_ppm	Ag_ppm
Cu_ppm	1	0.66	0.68
Mo_ppm	0.66	1	0.74
Ag_ppm	0.68	0.74	1



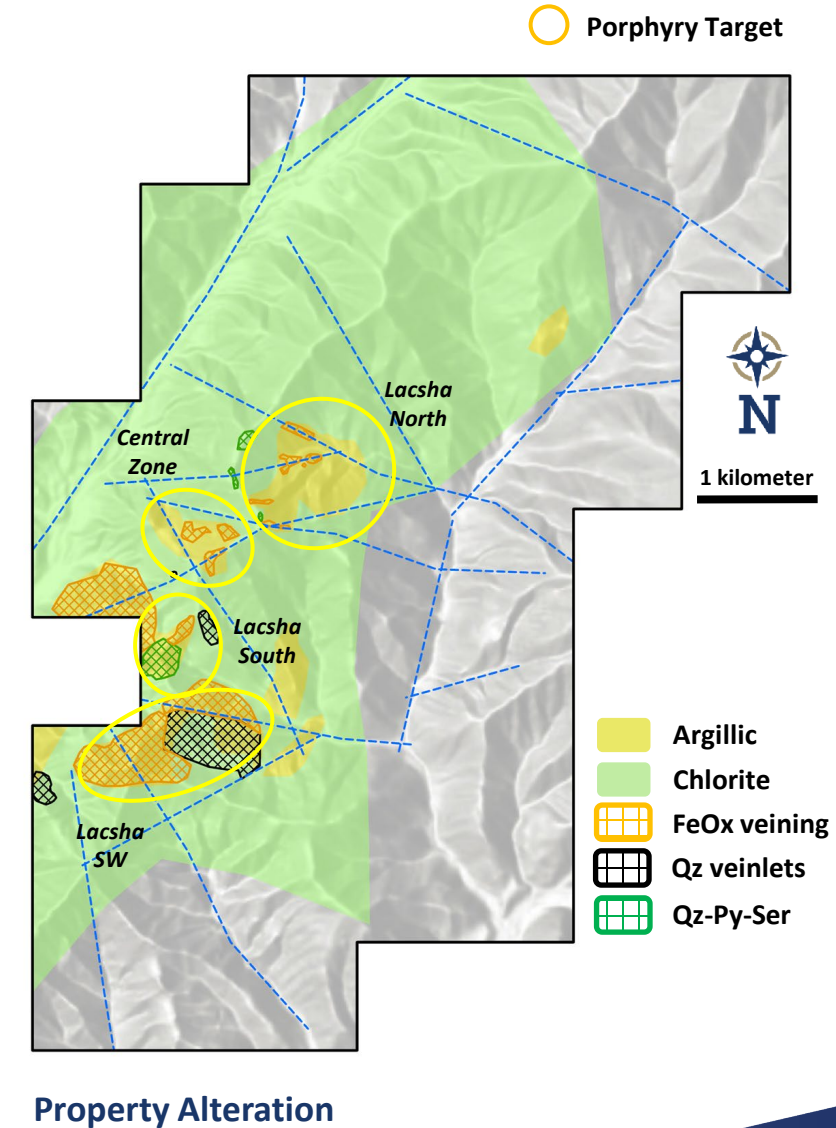
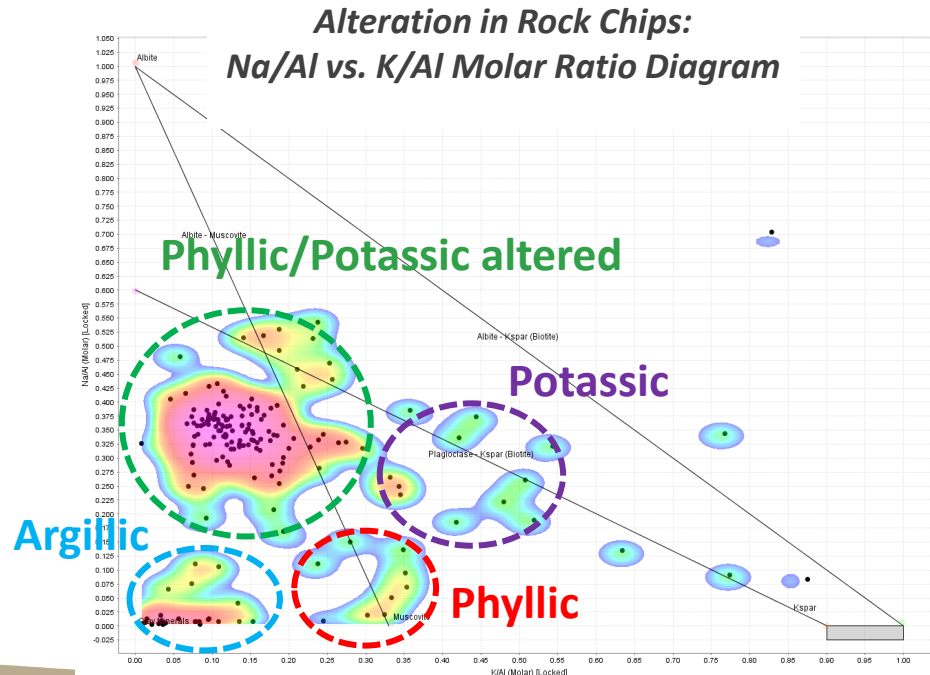
Copper in Rocks & Talus



Molybdenum in Rocks & Talus

Alteration & Veining

- Widespread alteration associated with magmatic-hydrothermal centers – Clay and Chlorite are dominant and suggest surface exposures are “high level” porphyry environment
- Quartz veinlets up to 3 cm wide & sheeted Fe-oxide veinlets to 2 cm wide



Channel Sampling

- Significant Cu + Mo endowment in distal alteration assemblage (vertical)

HIGHLIGHT RESULTS

▪ Lacsha North

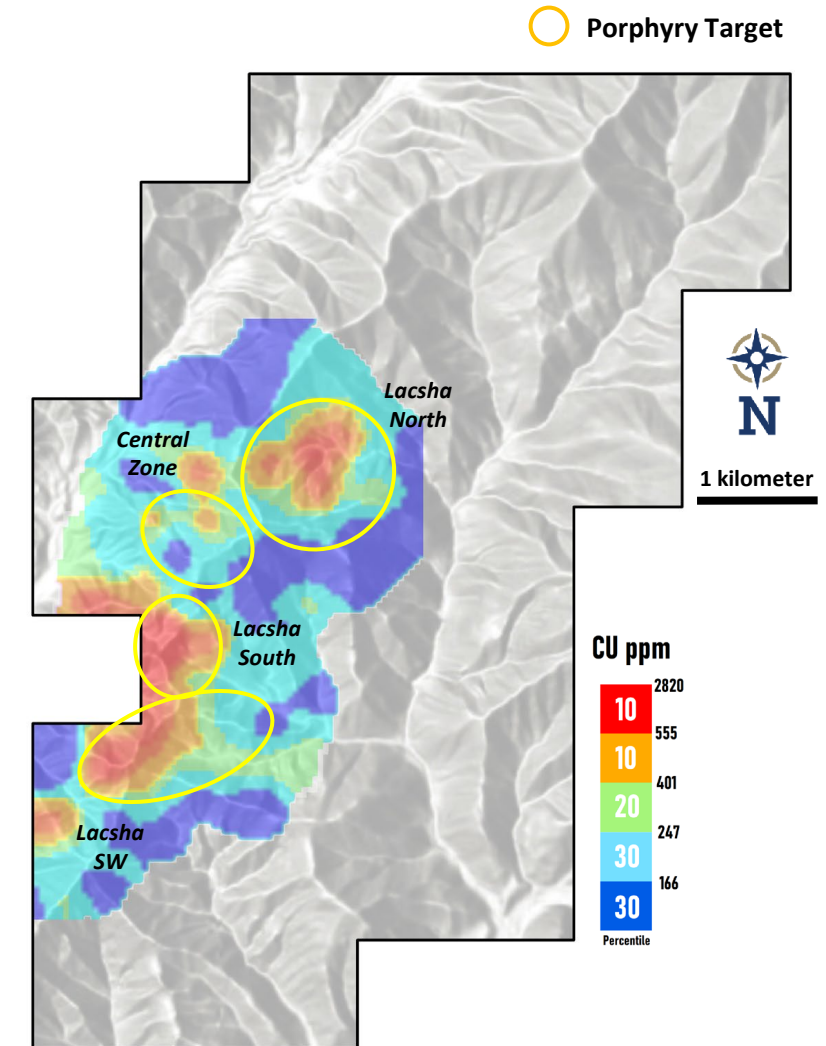
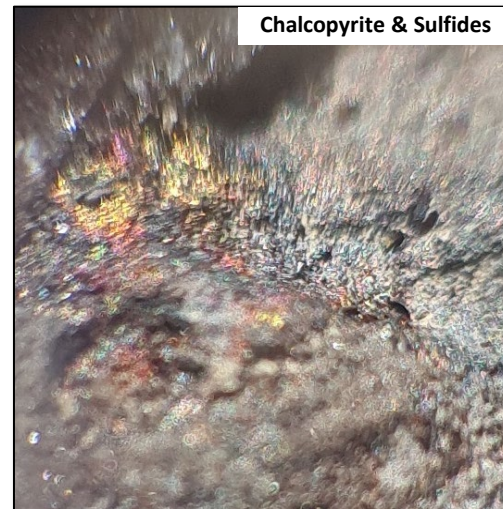
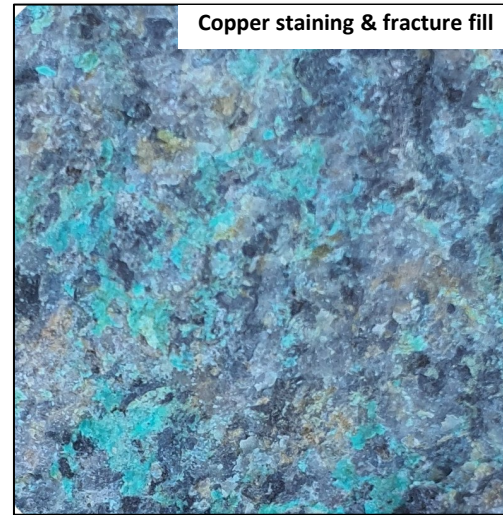
- 72m @ 0.20% Cu, 62 ppm Mo
- 16m @ 0.16% Cu, 57 ppm Mo
- 12m @ 0.17% Cu, 23 ppm Mo
- 38m @ 0.12% Cu, 21 ppm Mo

▪ Lacsha South

- 28m @ 0.17% Cu, 44 ppm Mo
- 74m @ 0.14% Cu, 47 ppm Mo
- 30m @ 0.22% Cu, 76 ppm Mo
- 26m @ 0.20% Cu, 119 ppm Mo

▪ Lacsha Southwest

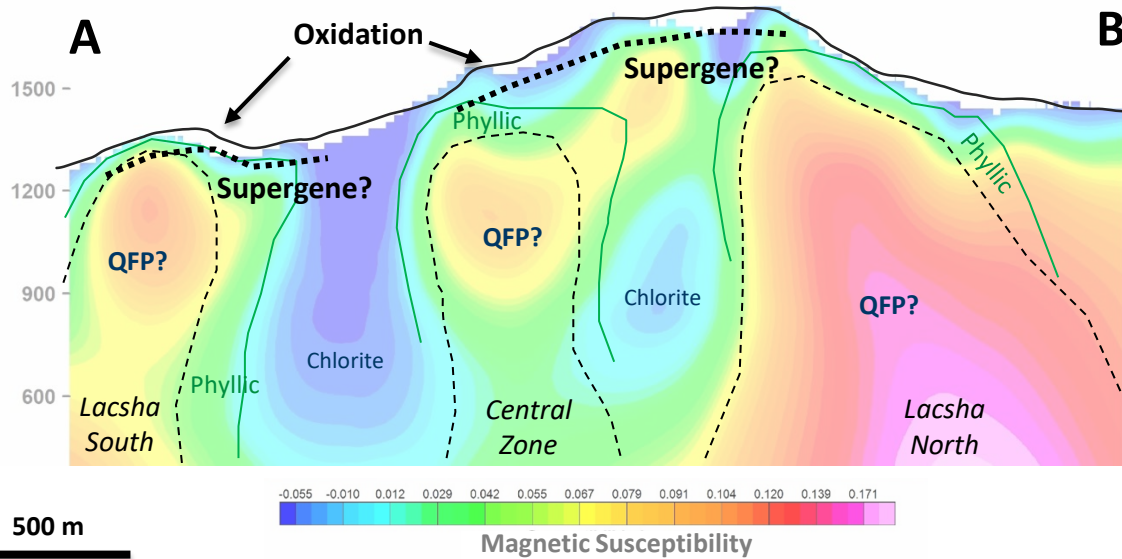
- 136m @ 0.24% Cu, 179 ppm Mo
- 52m @ 0.38% Cu, 237 ppm Mo



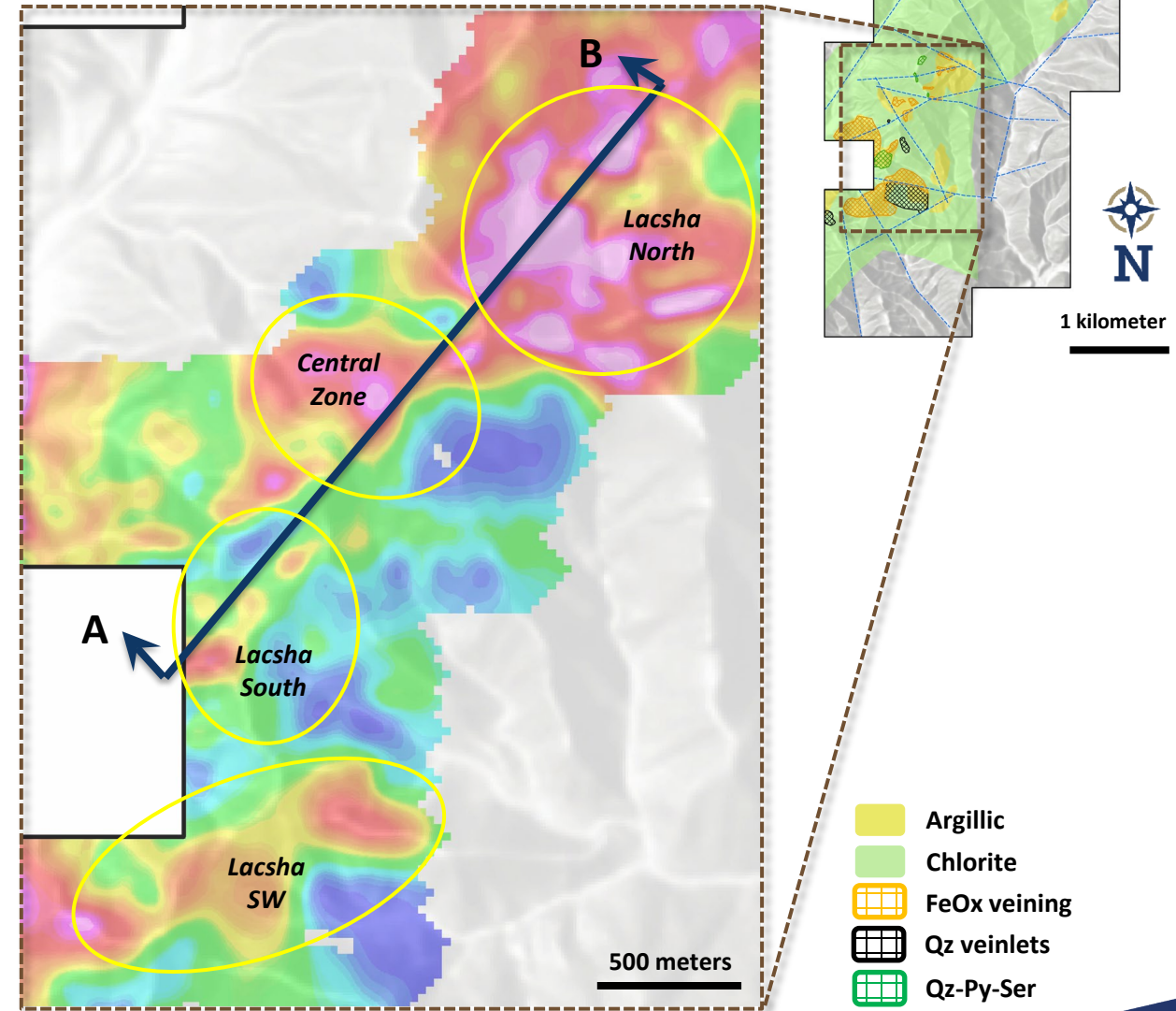
Gridded Talus Samples

Magnetic Features: Porphyry Targeting

- *Magnetic signature strongly correlates with surface anomalism & alteration*
- *Intense oxidation on surface = Potential for preserved Supergene mineralization*



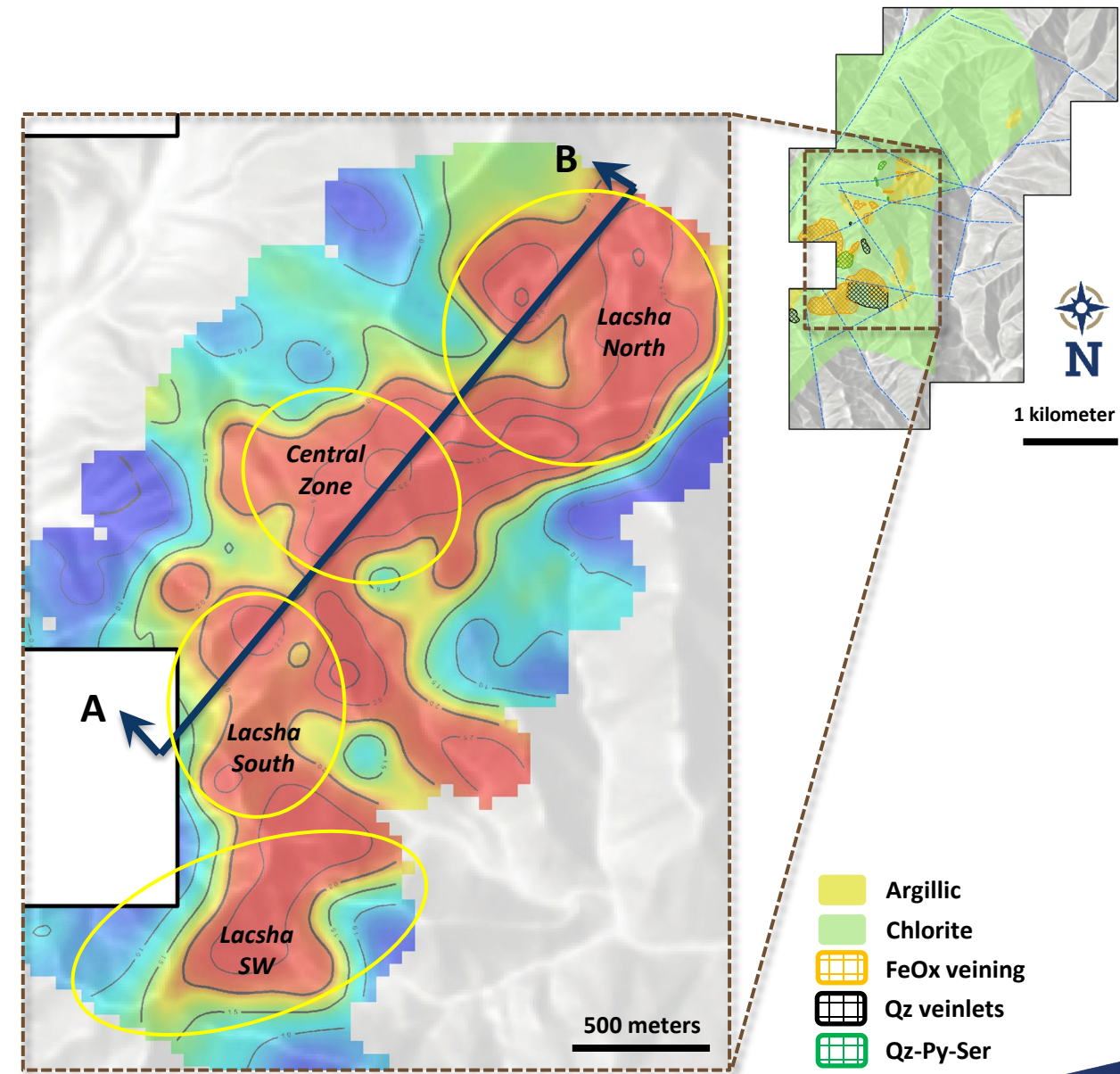
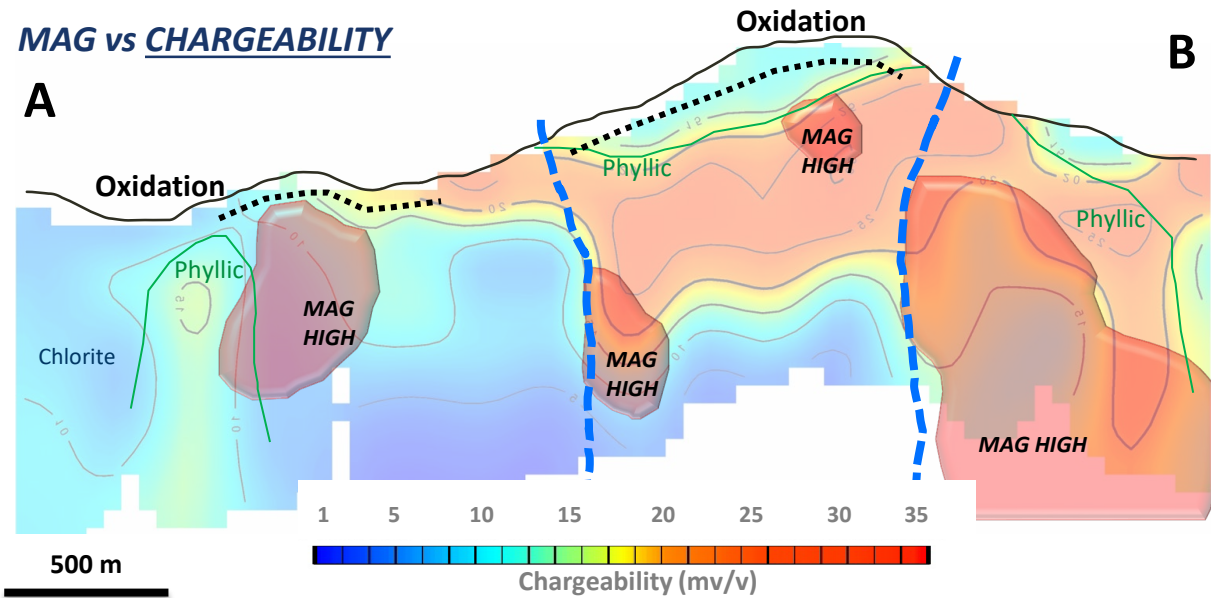
Magnetic Cross-section A-B



Reduce to Pole , High
Resolution Ground MAG

Chargeability Features: Porphyry Targeting

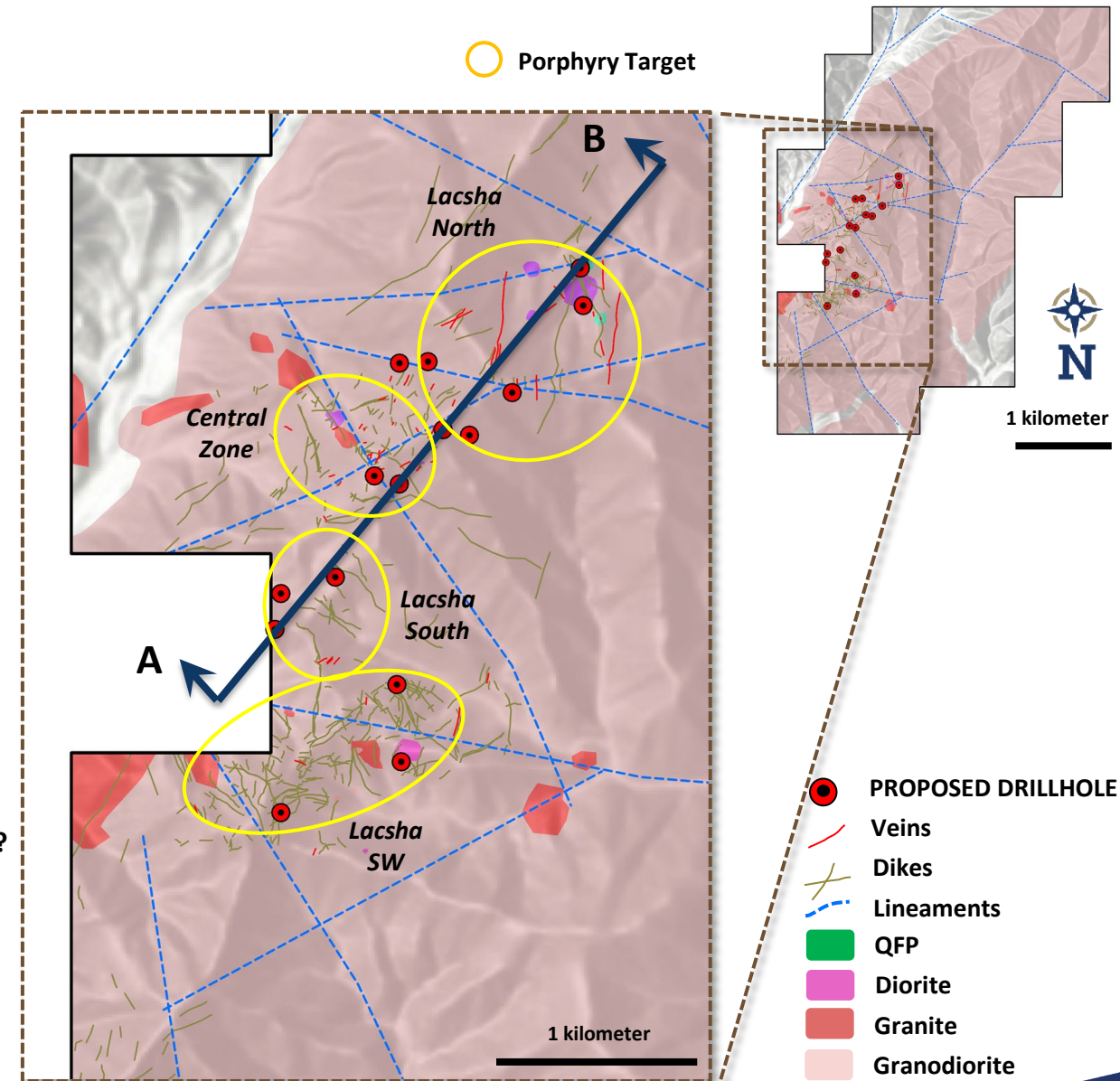
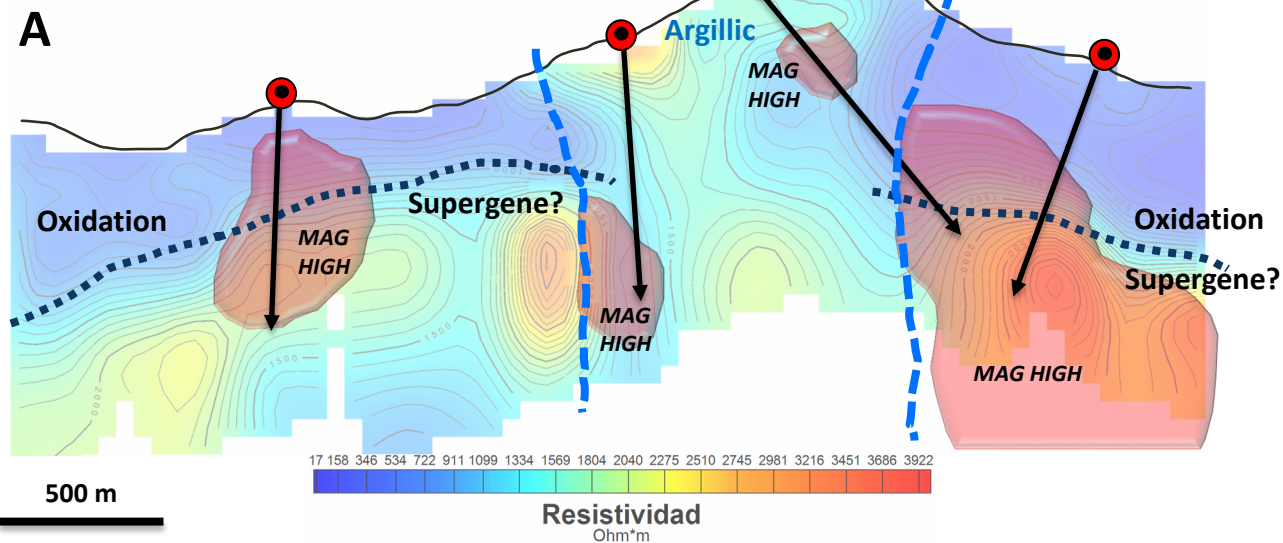
- Coincident chargeability high through the 4 target areas – mapping sulfides and/or alteration
- Intense oxidation on surface = Potential for preserved Supergene mineralization



Interpretations & Potential

- At least 4 potential magmatic hydrothermal centers – *drill ready targets*
- Drillhole locations chosen based on a combination of *Magnetic + IP + surface data*

MAG vs RESISTIVITY



Summary

Excellent Exploration Potential

- **Previously overlooked & underappreciated geologic setting:** Located in the emerging Northern Extension of the Cretaceous Porphyry Belt
- Confirmed copper endowment & evidence for multiphase magmatic hydrothermal system with a **large surface footprint**
- Surface oxidation zones = **increased potential for preservation of high-grade supergene zone**
- Significant Copper and Molybdenum high in the system suggests **core of the system is metal endowed**
- Minimal systematic exploration and **no known drilling** over primary porphyry targets





LATIN METALS INC.

Latin Metals Inc.

890-999 West Hastings Street
Vancouver, BC V6C 2W2
604.638.3456 | info@latin-metals.ca

TSX.V: LMS
OTCQB: LMSQF